

Updated: May 2025



Wrens Club Child Care Family Handbook

Fall/Spring

207 Pioneer DR Wrenshall MN 55797
wrensclub@isd100.org

2025-2026

Before and After school care and wrap around for preschool child care

Welcome to Wrens Club!

Wrenshall Public School in conjunction with Community Education, offers the Wrens Club program which is designed to meet the needs of children of working parents. Our primary purpose is to provide high quality care for children in pre-kindergarten through grade six. Wrens Club offers a fun, safe, caring environment that fosters recreational, social, educational and developmentally appropriate experiences that compliment your child's school day. Wrens Club is a state certified child care program allowing us to accept CCAP payments for families using assistance.

Program Standards

Community Education is part of the Wrenshall School District and all district policies apply to and are followed by Community Education personnel. Wrens Club staffing and program standards are approved by the Wrenshall Public School Board. School policies are determined by the school board. The Board of Education is elected by the people of this district and reflects their will and their authority. The determination of school policies rests solely with the school board. The superintendent and administrators execute these policies. The district reserves the right to change policies and procedures at any time. The Wrens Club staff meet the required qualifications and training and they dedicate themselves to making a positive difference in the lives of children. Wrens Club staff are under the direct guidance of the Wrens Club Coordinator and Community Education Coordinator. The Wrens Club program maintains a 1 staff to 15 children ratio in K-5, and 1-10 ratio for Pre-K as recommended by the Minnesota School Age Child Care Alliance.

Staff

In accordance with MN State Statute section 123B.03, all staff are required to have a background study done. Certified centers require 6 hours of study in child development and behavior guidance every year. Coordinators must have 16 hours of training.

The Wrens Club staff consists of experienced and well-trained people who care about children. They provide successful experiences, safety, appropriate developmental tasks, and a caring environment. Staff members attend training throughout the year provided by the school district, community education, and other community resources.

Wrens Club staff always appreciates parental input. Please communicate with the staff about daily concerns, family illnesses, or anything that might affect how your child's day might go.

We also encourage parents to share any special skill, activity or occupation with children and staff. We want to model this program around the children and families. Any suggestions or ideas would be welcomed and appreciated.

According to MN State Statute 245H.14 our staff are required to be trained in...

- First aid and Cardiopulmonary resuscitation annually.
- Abusive head trauma.
- Child development.
- Blood borne pathogens.
- We are required to have in service hours each year.

Abuse Reporting (Mandatory Reporters):

According to MN Statute 626.556, a professional or his or her delegate, who is engaged in the practice of... education, who has knowledge or reasonable cause to believe a child is being neglected or physically or sexually abused, shall immediately report the information to the local welfare agency, liaison officer, or the County Sheriff..." An oral report shall be made immediately by telephone or otherwise...and shall be followed within 72 hours, exclusive of weekends or holidays, by a report in writing. For matters occurring within the family unit, concerned school personnel will contact the Children's Service Intake Worker – Carlton County Human Services at 879-4583.

Staff must promptly inform a building principal of all reports filed and documentation will be kept on file. Principals, counselors, and the school psychologist are available to assist in the process.

Data Privacy:

All staff must be familiar with the Data Privacy Act. No verbal or written information about a student's school performance should be shared except within the school district for educationally relevant reasons. As a rule of thumb, any data arising out of the education of a student which identifies a student, except for directory information, is private data. Directory information is defined as a student's name, date and place of birth, major fields of study, weight and height of athletic team members, etc. Care should be taken to ensure students cannot overhear private data shared in conferences or telephone calls with staff, students, or parents; care should also be taken so that students do not view other students' grades.

Emergency Preparedness

According to MN State Statute 245H.15 Wrens Club has a written safety plan including...

- Fire related emergencies.
- Weather related emergencies.
- Intruder based emergencies.
- We follow the district's guidelines for fire and lockdown drills.
- In the event of an actual emergency, parents would be notified through the District communication site.

Emergency Closing or Dismissal

If Wrenshall schools are closed due to severe weather, or other emergency, Wrens Club will be closed. **If there is a 2 hour late start, we will open at 9:00 AM.** You **must** email Wrens Club if your child will not be coming before the late start or you will be charged a No Call/No Show fee of \$20. **If Wrenshall schools are closed early, parents must pick up 1 hour after school closes.** Please tune in to local radio and television stations for this information.

Parent Emergency

You must sign up for the Wrenshall Public schools' electronic notification system, an essential tool for notification and communication. Within minutes of an emergency, school officials can use the system to deliver a single, clear message to the students' parents or guardians by telephone, cell phone, e-mail, pager or PDA in any combination. It can also be used to notify you of a school closing due to inclement weather. **Wrens Club will send out a message out on brightwheel as well.**

If you need assistance with setting up a profile, please contact Michelle Blanchard at 218-384-4274 Ext 2101 and she will assist you. If you do not have access to a computer please feel free to come to the school to use our facilities.

Medications

According to MN State Statute 245H.13 Health and Safety Requirements...

- Exclusion of sick children and infectious disease outbreak control. We must supervise and isolate a child from other children in the program when a child becomes sick and immediately notify the sick child's parent or legal guardian. We must post or give notice to the parent or legal guardian of an exposed child the same day the program is notified of a child's contagious reportable disease specified in Minnesota Rules, or scabies, impetigo, ringworm, or chicken pox.
- Immunizations. By a child's date of attendance we must maintain or have access to a record detailing the child's current immunizations or applicable exemption.
- Administration of Medicine. We may administer personal prescriptions under the following guidelines:
 - We will not administer the first dose of any medication due to possible reactions.
 - For long-term medications (prescribed for more than two weeks), a written statement from the family physician indicating the need for such medication to be administered during Wrens Club hours must be on file.
 - The medication will be stored in a safe, appropriate place with access restricted to the Wrens Club staff only.
 - Under NO circumstances shall Wrens Club personnel give aspirin, Tylenol, cough medicines, etc. without a physician's prescription and signed parent permission.
 - NO medication should be sent with the child – parents must deliver it personally. The medication must be in the original bottle, properly labeled. The medication cannot be improperly labeled in containers such as plastic bags or envelopes.
 - EPI-Pens must be dropped off by the parent the first week of school.

Illness or Emergency

In an instance of severe illness or injury, the staff will bring your child to the nurse, if it is during school hours, and will notify parents. At other times, staff will make an evaluation and contact parents. **PLEASE DO NOT** bring a sick child to Wrens Club. **A sick child must be fever/vomit-free without medication for 24 hours before returning to child care or preschool programs.** The site is not equipped to handle sick children. You must email Wrens Club and also notify the Elementary attendance office when your child is sick and won't be attending the program, or the No call/No Show fee will be billed to you.

Children who receive minor injuries will be given first aid and the parent will be notified when picking up the child.

In the event of an emergency, parents will be notified immediately and, if necessary, the child will be transported to a parent-specified hospital by the local emergency responders for treatment at the parent's expense. Parents are responsible for the child's health insurance/accident coverage.

Food Allergies

If your child has any food allergies, it is VERY IMPORTANT that you indicate these allergies on the Wrens Club Enrollment Form. Please be specific about possible reactions. You should send an Epi-pen for severe reactions. Please consider sending snacks with your child or provide a list of approved snacks so we can accommodate them better.

Breakfast, Lunch & Snacks

- All Students (except for preschool children) will be dismissed at 8:00AM for breakfast
- Lunch
- CACFP will serve meals for wrap around students
- paperwork needs to filled out
- Snacks for wrap around students will be provided at 2:00 PM
- Snacks will be provided at 3:45 PM for After school program

Eligibility

- Children must be three years old by September 1 of the school year and enrolled in one of our School Readiness programs.
- Children must be able to use the toilet and clean themselves independently.
- Children should not be wearing diapers or pull-ups as we do not have adequate facilities or training for changing diapers. Please notify staff regarding any concerns in this area.
- Recurring bathroom accidents will require a parent meeting with Wrens Club Coordinator and Community Education Coordinator and could lead to potential discontinuation of services.

Children with Special Needs/IEPs

- Every effort will be made to accommodate children with special needs.
- We can not guarantee one on one care for students.
- Parents must schedule a meeting with the program coordinator to provide information about the child and devise a plan for Wrens Club to meet the needs of the child prior to enrollment.
- If the family expresses a need for accommodations for their child to participate in Wrens Club or Wrens Club staff determines special accommodations are needed for participation, Wrens Club will work with the family to come up with a plan to help the child succeed in the program. Items to consider:
 - The student's ability to function in an environment of 30-50 kids.
 - The student's ability to function on the playground without individual supervision.
 - The student's ability to function with a staff to child ratio of 1:15.
- Accommodations that are agreed upon will be outlined in a document to be shared with the family and entered into the child's record at Wrens Club.
- It is important that our program is assessed to determine if we are able to provide the best care for every child.

Parent's To-Do List...

- Sign your child "In" & "Out" each day. This means walking your child to the Wrens Club room. Parents will need to sign out in our software program each day when they pick up.
- Let your child's classroom teacher know your child's Wrens Club schedule.
- Email Wrens Club and your child's teacher when your child will not attend a scheduled day at child care, by 10:00 am.
- Keep your child's enrollment information up-to-date to ensure your child's safety.
- Make sure your child is picked up by **5:30 pm** to avoid a late pick up fee.
- **Adequately dress your child for indoor and outdoor play.**
- Label your child's personal belongings.
- **Do not send your child with any electronic devices**

Children's Clothing/Belongings

Children should be adequately dressed each day for indoor and outdoor activities. Wrens Club follows the same policy regarding outerwear as the Elementary School. Outerwear should be labeled with the child's name. The program is not responsible for lost or stolen articles. For younger children, please send an extra set of clothing. Please do not allow your child to bring any toys, games, or electronic toys. For pre-schoolers please remember to send indoor shoes during the wintertime.

Children at any age are NOT allowed to be on any electronic devices while at care. If a child brings a cell phone or electronics to care, it will be kept at the desk until the parent picks up the child.

Registration Process

To register your child for Wrens Club, you will need to read all of the materials in this handbook and complete the following before your child may attend:

- Signed the last page of the Family Handbook.
- Wrens Club Enrollment Form.
- \$50 registration fee per family.
- Any past due balances with Community Education are paid in full.
(This may include past due balances for School Readiness or Wrens Club bills.)
- ALL registration materials listed above are complete.

Before/After School & Wrap Around for Preschool

2025-2026 CALENDAR

Save the dates! Check monthly calendars/newsletters sent home in folders for any updates or changes.

August

S	M	T	W	T	F	S
					1	2
3	4	5	6	7	8	9
10	11	12	13	14	15	16
17	18	19	20	21	22	23
24	25	26	27	28	29	30

September

S	M	T	W	T	F	S
	1	2	3	4	5	6
7	8	9	10	11	12	13
14	15	16	17	18	19	20
21	22	23	24	25	26	27
28	29	30				

October

S	M	T	W	T	F	S
				1	2	3
4	5	6	7	8	9	10
11	12	13	14	15	16	17
18	19	20	21	22	23	24
25	26	27	28	29	30	31

November

S	M	T	W	T	F	S
					1	
2	3	4	5	6	7	8
9	10	11	12	13	14	15
16	17	18	19	20	21	22
23	24	25	26	27	28	29
30						

December

S	M	T	W	T	F	S
	1	2	3	4	5	6
7	8	9	10	11	12	13
14	15	16	17	18	19	20
21	22	23	24	25	26	27
28	29	30	31			

January

S	M	T	W	T	F	S
				1	2	3
4	5	6	7	8	9	10
11	12	13	14	15	16	17
18	19	20	21	22	23	24
25	26	27	28	29	30	31

Monday/Wednesday/Friday @ 6:30-8:00 and 3:05-5:30
Tuesday/Thursday @ 6:30-8:00 and 12:30-5:30

ALL DAY FUN DAYS
Wrens Club will be open on early release and no school days due to teacher in-service days. This will be free for registered Wrens Club before/after school families and wrap around PreK families. *Note: Wrens Club Fun Days will not be open on holidays or holiday breaks.

AUGUST

SEPTEMBER
2: First Day of Wrens Club

OCTOBER
16-17: Closed (MEA Weekend)
31: All Day Fun Day!

NOVEMBER
26-28: Closed (Thanksgiving Break)

DECEMBER
24-31: Closed (Holiday Break)

JANUARY
1-2: Closed (Holiday Break)
14: All Day Fun Day!
26: All Day Fun Day!

FEBRUARY
13: All Day Fun Day!
16: Closed (President's Day)
27: All Day Fun Day!

MARCH
20: All Day Fun Day!
23-27: Closed (Spring Break)

APRIL
3: Closed (Good Friday)

MAY
1: All Day Fun Day!
25: Closed (Memorial Day)
29: Last Day of Wrens Club

If school is closed due to inclement weather, all programs will be closed.

February

S	M	T	W	T	F	S
1	2	3	4	5	6	7
8	9	10	11	12	13	14
15	16	17	18	19	20	21
22	23	24	25	26	27	28

March

S	M	T	W	T	F	S
1	2	3	4	5	6	7
8	9	10	11	12	13	14
15	16	17	18	19	20	21
22	23	24	25	26	27	28
29	30	31				

April

S	M	T	W	T	F	S
				1	2	3
4	5	6	7	8	9	10
11	12	13	14	15	16	17
18	19	20	21	22	23	24
25	26	27	28	29	30	

May

S	M	T	W	T	F	S
					1	2
3	4	5	6	7	8	9
10	11	12	13	14	15	16
17	18	19	20	21	22	23
24	25	26	27	28	29	30
31						

June

S	M	T	W	T	F	S
	1	2	3	4	5	6
7	8	9	10	11	12	13
14	15	16	17	18	19	20
21	22	23	24	25	26	27
28	29	30				

July

S	M	T	W	T	F	S
				1	2	3
4	5	6	7	8	9	10
11	12	13	14	15	16	17
18	19	20	21	22	23	24
25	26	27	28	29	30	31

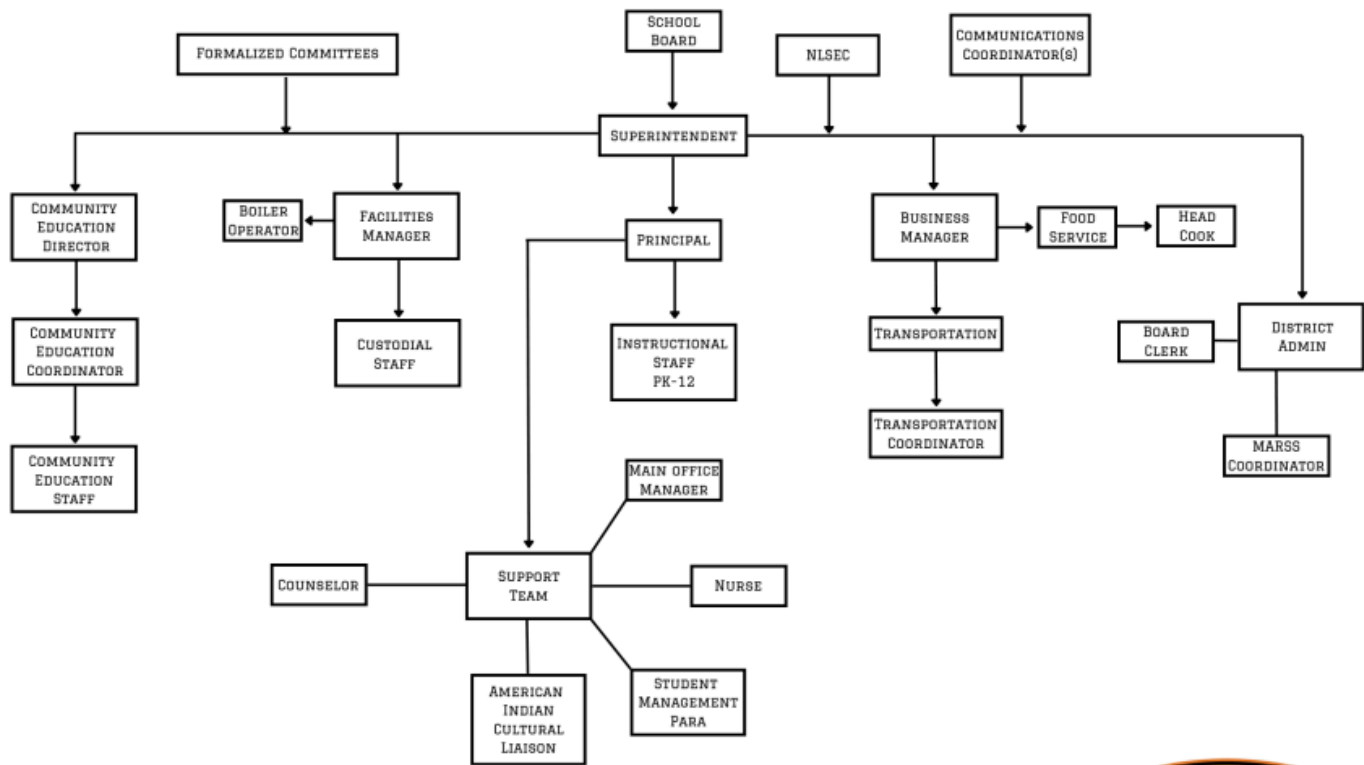
***If school is closed due to inclement weather all programs will be closed**

[2025-26 School Calendar - Wrenshall School Calendar](#)

Our door is always open. Feel free to drop by our Wrens Club program any time. If you have concerns, complaints, or problems with our program, please email wrensclub@isd100.org or kbeck@isd100.org

Wrens Club Child Care Organization Chart:

WRENSHALL SCHOOL DISTRICT ORGANIZATIONAL CHART



LAST UPDATED FEBRUARY 2025

Community Education Coordinator Schedule fall/spring schedule:
Monday 7:00 AM - 12:00 PM
Tuesday & Thursdays 9:30 AM - 3:30 PM

Program Fees

Annual registration fee per family: \$50

Flat rate for preschool wrap around (3 & 4 year olds) care: (School year 2024-25)

- ☐ \$80 / month Tuesday & Thursdays – 12:30–3:00
- ☐ \$20 / month bus pick up & drop off with breakfast (30 minutes of care 8:00–8:30 AM)

Before & After School (K-6) Flat Rates:

Option 1 – Before School (20 days average per month / \$4.00 each morning)

(6:30 AM – 8:00 AM)

- ☐ Child 1: \$80/month
- ☐ Sibling: \$64/month – 20% discount

Option 2 – After School (has the option to attend after early release days)

(3:05 PM – 5:30 PM) (20 days average per month / \$6.00 each night / \$2.40 hour)

- ☐ Child 1: \$120/month
- ☐ Sibling: \$99/month – part time – 20% discount

Option 3 – Both Before & After School (has the option to attend when there is a teacher in service days – not on holidays, winter break or spring break)

- ☐ Child 1: \$160/month
- ☐ Sibling: \$128 – 20% discount

After school snacks are provided

Lunch on days school is not in session and we provide childcare – families are responsible for packed lunches

Schedules need to be entered in the Brightwheel program a minimum of one week prior to care or emailed to wrensclub@isd100.org.

Billing will be conducted off the monthly schedule submitted. Cancellations made less than one month in advance for any reason will not be deducted from billing. This will help us maintain our staff numbers.

*No Call/No Show Finders fee \$10

*Show up fee – child here without being scheduled \$10

Late Pick-up/Early drop-off fee (before 6:30 AM/after 6:00 PM)\$10 first minute-\$1 per minute after 1st minute

*Refunds are NOT issued for absences from scheduled days. To avoid No Call/No Show fee, email Wrens Club staff before **10 am** when they will not be attending child care for any reason. *Parents who have frequent **No Call No Shows** or late pick up charges may have their child care suspended

If your payments are not made and you go over 30 days you will be charged a \$20.00 late fee.

If your payments are not made and you go over 60 days you will be charged a \$40.00 late fee.

If your payments are not made and you go over 90 days you will automatically be sent to collections and your child care will be discontinued.

If you are sent to collections you will be charged an extra 37% to your bill for collection fees.

Invoices will be made available to pay online. A 2% convenience fee is added to all credit card/debit card payments. ACH (checking account transfers) have a .6% fee added to them. Checks or money orders will be accepted during Community Education Office hours. Community Education hours are:

In the event your schedule changes....

Absent Notification: – The safety of your child(ren) is our primary concern. **Please email Wrens Club before 10:00 am if your child will not be coming after school. We are discontinuing the use of the B app.** You may email at any time. If we are not here, we will get the message first thing in the morning. ***The elementary office cannot call to inform us of absences. The classroom teachers are also unable to call us if your child is absent.** If your child is scheduled to be at Wrens Club and does not come to us, we must look for them. This takes time and takes staff away from the other children. Our staff usually has at least 30 kids to check in after school and we need to know where they all are. To avoid a **No Call/ No Show fee**, please email Wrens Club staff before **10:00 am** if your child will not be attending child care for any reason. **Email to Wrens Club is the best form of notification so please send us an email if your schedule changes for any reason.** Wrensclub@isd100.org

In the event that you will not be able to pick up your child on time, notify the Wrens Club staff immediately of the alternate arrangements. A late pick-up fee of \$10 for the first minute and \$1 each additional minute after 6:00 PM will be assessed. In addition, the following will happen:

Attempt to Contact Time Frame: If you are late in picking up your child, the following procedure will be followed:

After 10 minutes: Call parent/guardian

After 15 minutes: Call emergency contacts listed for child

After 30 minutes: Call the police. If you are more than thirty minutes late and we are unsuccessful in reaching you or an emergency contact person, the police will be called for further assistance.

If you have picked up your child late more than once, or if you cancel your child's schedule on a consistent basis you are subject to discontinuation of child care.

Release of Children

Wrens club will only release children to the parent or person authorized on your emergency pick up list. They must be at least 16 years old to sign out your child. Please email wrensclub@isd100.org to inform us if someone other than you will pick up your child/ren. If a parent or other person appears physically/emotionally impaired to the extent that the staff is concerned that the child is at risk of danger, the staff person will call other people listed on the emergency list. If no one can be reached, we may need to call 911.

Wrens Club offers:

- Educational and Recreational theme-based activities.
- Audio, Visual & Hands-on play and learning experiences.
- Physical Activity – Gym, Outside.
- Manipulative & Sensory Play.
- Quiet/Homework Time.
- Food Service Breakfast and Lunch Program (Summer requires a packed cold lunch).
- Morning and Afternoon snack.
- Technology.
- Skill Building.
- Games.
- Free Choice, Creative Play.

Wrens Club seeks to provide a quality program where:

- Kids can be kids.
- The atmosphere is comfortable, relaxed, happy, and busy.
- The environment is conducive to a wide-range of opportunities both active and passive.
- There are a variety of age-appropriate activities and choices offered.
- The activities offered provide children with educational, social and recreational experiences.
- Individual differences are respected and valued.
- Staff are flexible and responsive to meet the needs of all children enrolled.
- There are clear and consistent rules enforced that ensure safety.
- Kids learn to resolve conflicts in a positive and effective manner.
- Parents are well informed about the program and feel comfortable with their choice of childcare.
- Families find the program to be flexible and affordable.

Behavior**Wrenshall Public Schools Policy 514 expressly prohibits bullying, and outlines the procedures and regulations for bullying prevention and intervention, including:**

A person who engages in an act of bullying, reprisal, or false reporting of bullying shall be subject to discipline for the act in accordance with school district's policies and procedures. Consequences for students who commit prohibited acts of bullying may range from positive behavioral interventions up to and including suspension and/or expulsion. The school district may take into account the following factors:

- The developmental and maturity levels of the parties involved.
- The levels of harm, surrounding circumstances, and nature of the behavior.
- Past incidences or past or continuing patterns of behavior.
- The relationship between the parties involved.
- The context in which the alleged incidents occurred.

Wrens Club Behavior Expectations

Please see attached behavior policy plans, one for PreK-2nd grade and one for grades 3-5. It is the goal of the Wrens Club program to guide children to be happy, responsible, cooperative participants in the program. We use positive, nonthreatening techniques that help the child become responsible for his/her actions. The child should also respect the rights and feelings of others.

- Be prompt and prepared.
- Respect authority.
- Respect the rights of others.
- Respect property.
- Display a concern for learning.
- Display appropriate social skills.

Wrens club Discipline Plan: Grades 3-6

Behavior	Step 1	Step 2	Step 3
Mild Behaviors Behaviors that demonstrate a lack of respect for the feelings of other IE: name calling, mocking, put downs, rude gestures (eye rolling, dirty looks, sighing), taunting and related behaviors.	*Staff has a conversation with student about behavior <ul style="list-style-type: none"> • Verbal Warning • Child writes Fix It plan • Staff documents incident & parents sign • Staff talks face to face with parent about behavior & goes over Fix It plan and student, staff & parents sign & date 	*Staff has conversation with student about behavior <ul style="list-style-type: none"> • Time Out 2-5 minutes • Review Fix It Plan with staff • Logical consequence (loss of privilege in the activity for the day-going up the slide the wrong way/no slide for the day) • Staff documents the incident in the binder • Staff talks face to face with parent about behavior and go over Fix It plan and student, staff, and parent sign & date 	*Removal from program area <ul style="list-style-type: none"> • Removal from program for the rest of the day. Staff calls parent to come & pick up child from program. • Letter of apology written by student • Personal Behavior Plan developed by student, parent, and Coordinator • Incident reported to Elementary Principal • Staff documents incident in binder • Staff talks face to face with parent about behaviors, Review Fix It plan & all parties sign & date
Moderate Behaviors Behaviors that may cause injury IE: damaging property, rough play, exclusion, gossip/spreading rumors, insults, negative written notes, negative behaviors toward a specific person, and related behaviors.	Anyone with moderate behaviors should have a Fix It plan in place <ul style="list-style-type: none"> • Review Fix It plan • Removal from program for the rest of the day, staff call parents to pick up child • Letter of apology from child • Personal Behavior plan developed by student and parent. Return to Coordinator. • Staff documents in binder • Staff talks face to face with parents, goes over Fix It plan and all parties sign and date 	<ul style="list-style-type: none"> • Review Personal Behavior plan • Removal of program for the rest of the day plus 1 day. Staff call parent to pick up child from program • Incident reported to Elementary Principal • Staff documents incident in binder • Parents and Coordinator must meet before the child can return to the program 	<ul style="list-style-type: none"> • Child is removed from the program for a minimum of 5 program days. Staff call parent to pick up child. • Staff documents incident in binder • Parents, Coordinator, and Director must meet before child returns to the program

<p>Severe Behaviors Behaviors that cause injury IE: biting, harassment,(racial, ethnic, gender, or religious), stealing, hitting, kicking, punching, repeated/chronic failure to comply with rules, spitting, vandalizing, verbal or written threats, slapping, grabbing, hair pulling, kneeling, damaging property, and related behaviors.</p>	<p>Student with severe behaviors should have a Personal Behavior Plan in place already</p> <ul style="list-style-type: none"> • Review Personal Behavior Plan • Removal from program for remainder of day plus 3 program days. Staff calls parents to pick up child. • Report incident to Elementary Principal • Staff documents incident in binder • Parent and coordinator must meet before child can return to program 	<ul style="list-style-type: none"> • Removal of program for the rest of the day plus 9 program days. Staff calls parents to pick up child • Staff documents incident in the binder • Parents, Coordinator, and Director must meet before child can return to the program. 	<ul style="list-style-type: none"> • Child is removed from program for a minimum of 27 program days • Staff documents incident in binder. • Parents, Coordinator, Director, and Elementary Principal must meet before child returns to program
--	--	--	---

** Behavior is categorized as mild, moderate, or severe. Each incident in a category requires moving up a step in consequence.

Wrens Club "Individual Behavior Plan"

To be filled out by student & parent the evening of the event

Name_____

Date_____

I chose a behavior at Wrens Club that violates our behavior policy.

What I did_____

Because I have violated the behavior policy multiple times, and I did not follow my Fix It plan, the next time I break behavior rules, I will

_____ Not participate in group play for the rest of the day

_____ Time Out for 10 minutes and verbal apology to all people affected including other kids in the program

_____ Time Out for 20 minutes and write a letter of apology to all people affected including other kids in the program/ The letter will be read aloud to the group.

I will also choose a better behavior when I am feeling _____(fill in feeling at time of rule violation)

The behavior I will choose when I feel this way is_____

Student Signature_____

Parent Signature_____

Staff Signature_____ (sign when returned)

Date signed by Staff_____

Wrens Club "Fix It" Plan

Name _____

Date_____

I chose a behavior at Wrens Club that violates our behavior policy.

What I did_____

In the future I am going to make better choices. When I feel like I am going to break a behavior rule, I will choose to do this instead-

If I continue to violate the behavior rules in Wrens Club, I know I will be put on an individual behavior plan which could lead to suspension from the program.

Student Signature_____

Staff Signature_____

Parent Signature_____

Date Signed (parent)_____

**Wrens Club Behavior Plan
Grades PreK- 2**

For students ages 3/4 through grade 2, we will continue to use the Red Choices/Green Choices Pyramid model for handling behavior.

If children bring home a red slip due to making “red” choices, please take time to talk through the behavior with your child and write out thoughtful answers to return the following day that they attend Wrens Club. We appreciate your help!

Behavior Intervention Form

Child’s Name: _____

I broke the rules of behavior at Wrens club today.

What I did: _____

I believe I made others feel _____
(emotion/physical feeling)
with the way I acted.

In the future, I can stop breaking the behavior rules in Wrens Club by doing this instead

Parent Signature_____ Date_____

Student Name_____
(please have students attempt to write their name)

PARENTAL HAND BOOK NOTIFICATION FORM

Please sign and date below. indicating that you have read and understand all of the information provided in this Wrens Club Family Handbook.

This form must be returned to Wrens Club staff along with your child's Enrollment Form and schedule, prior to their first day in the Wrens Club Program (one form per family).

Name of Child/Children:

Print Parent/Guardian Name:

Parent/Guardian Signature	Date
-----	-----